

RED BRUSH RIFLE RANGE, INC.



A SAFE PLACE TO SHOOT

June 2021 Newsletter

June MEETING

Thursday 3rd

Officer's Meeting – 7:00 PM
Club Member's Meeting – 7:30 PM

NOTE: American Legion in Newburgh
corner of State Road 261 and Sharon
Road

**BRING YOUR OWN LAWN
CHAIRS AND MASKS!**

RANGE ADDRESS

3299 West Eble Rd.
Newburgh, IN 47630

www.redbrush.org



RANGE HOURS

Sun – Thu 6:00 AM – 10:30 PM

Fri – Sat 6:00 AM – 12:00 AM

UPCOMING RANGE EVENTS...

500-yard range open to members only for scope setting and load testing – Sat May 29

Shooting 11:30 AM – 4:30 PM 500-yard bays, 400 yd. Rifle Bay
CLOSED

AR-15 Match – Wed Jun 2, 9, 16, 23, 30

Jason Short (812-455-3455)
6:00 PM – 8:00 PM (Weather permitting), 400 yd. Bay.
400 yd. Rifle Bay **CLOSED for other shooting.**

IDPA Pistol – Sat Jun 5

Brad Eadens (270-854-4090)
7:00 AM – 3:00 PM, Bays 1, 2, 3, 5 & M.R.

Bowling Pin Shoot – Thursdays Jun 10, 17, 24

Charlie Hallam (812-424-2358)
6:00 PM – 10:00 PM, Bay 1

Range Maintenance – Sat Jun 12

Jeff Webber (812-431-6226)
8:00 AM – 12:00 PM Rifle Range Closed
Come out to help and get your hours.

Red Brush Steel – Sun Jun 13

Alan Cox (RedBrushSteel@hotmail.com)
Setup 7:00 AM, Registration 8:00 – 8:50 AM, Match 09:00 AM
Bays 1, 2, 3, 5, 6, 7, & M.R. & Shelter

**Brownell Youth Day – Sat Jun 19 6:00 AM – 4:00 PM
All Ranges Are Closed**

Appleseed Rifle Training 25 m – Sat/Sun Jun 26, 27

Ben Swartz (812-459-5097)
6 AM - 6 PM Signup is at www.appleseedinfo.org.
Pistol Bay 5

500-yard range open to members only for scope setting and load testing – Sat Jun 26

Shooting 11:30 AM – 4:30 PM 500-yard bays, 400 yd. Rifle Bay
CLOSED

Sub-Gun – Sun Jun 27

Mike Maurer (812-305-2767)
12:00 PM – 4:00 PM, Bay 1

Precision Rifle Challenge – Sun Jun 27

Adam Leonberger (redbrushprc@gmail.com)
500 yd. Bay. The 400 & 500 yd. Rifle Bays **CLOSED for other shooting.** See Attached Flyer

**DPMS PANTHER
AR-15**



(stock photo)

***RED BRUSH
GUN OF THE MONTH**

Firearms provided by:

Randy Hansen

Winner of the Gun of the Month
Raffle may choose either firearm!
Tickets only \$10!

**Beretta 92 Compact
in 9mm**



(stock photo)

FROM THE PRESIDENT, JOE LUTZ

Red Brush Members

Long time board member Mr. Mike Winge has tendered his resignation from the board due to his business priorities. Mike reports he is shorthanded and working many hours overtime. Thanks, Mike, for representing the members by your involvement on the board. The next alternate to replace Mike is Mr. Bryan Breedhold. Welcome to the board Bryan. Bryan will complete Mike's remaining term.

Respectfully,
Joe Lutz

FROM THE 2021 YOUTH DAY CHAIR, CHARLES HALLAM

Reminder for the 2021 Youth Day pre-registration at Red Brush. The pre-registration will be done through www.Redbrush.org (see below flyer). For our members, this is worth a workday credit to all volunteers. More to come!

Thank You,
Charles Hallam

FROM THE RANGE OFFICER, FRANK FINDLEY

REMINDER: 500 YARD OPEN RANGE TIME FOR THE MEMBERSHIP – MAY 29

To facilitate more access to the 500-yard bay, we will be hosting monthly half days where the 500-yard bay will be open to the general membership. During these times monitors will be present to help coordinate the status of the bay. The members will be able to place targets at any distance and all type of rifles can be used. The 400-yard bay will be closed at these times. The time of these shoots are being placed on the range calendar with the first one Saturday May 29 from 11:30 am to 4:30 PM.

MAKE SURE YOUR AMMUNITION IS SAFE TO USE

Across the country there have been several recent high-profile incidents of firearms exploding due to ammo issues. As ammunition and reloading supply shortages continue, some gunowners have been tempted to buy remanufactured ammo from sources of unknown origin. And reloaders have found themselves using powder and other components that they do not normally use. Please beware that these situations can increase the chance of overcharged cartridges and other issues that can cause catastrophic failures. So please consider these recommendations:

- Do not use reloaded/remanufactured ammunition from sources for which you cannot verify quality processes were followed. There are several good commercial remanufacturers and, of course, talented reloaders. But if you are unsure of who made it, it is best not to use.
- Verify your reloading data. Each gunpowder has its own characteristics based on its chemical composition, granular shape/size, and other factors. So, they are not interchangeable. Therefore, make sure you are using the appropriate reloading data for the components you are using.
- Check to make sure older ammo and reloading components have not been recall. With the shortage of reloading components in retail outlets, some reloaders have begun buying old components from other reloaders. Some lots of this older stock may have been recalled by manufacturers. It is a good practice to check manufacturers' websites for recall notices. Oftentimes you can trade this old stock for new items!
- Examine surplus cartridges for corrosion, loose/damaged bullets, and improperly seated primers. If you find issues with a round, do not use it.

By following these simple steps, you will dramatically lower the chance of issues.

ADJUSTING TARGET HEIGHT TO ENSURE ROUNDS STAY ON RANGE

In our last member meeting the topic of target height was brought up again. It is important that the proper target height be chosen for your shooting position to ensure rounds stay on the range. From our range rules:

- Range Rules Section 13 E.
- Always place targets down range as straight in front of your firing position as possible, to ensure the bullet path is down range toward the impact berm. Do not intentionally shoot over the berms (the dirt banks that divide the shooting bays) or the impact berms behind your target. Never fire a round in the air, at a bird in a tree or an animal on a berm. Never throw targets up into the air and shoot at them with a handgun or rifle.
- Consider the trajectory of your bullet. From your shooting position, aim at your target. Then move your aim to the side of the target. If your sights are above the impact berm you very well might shoot over it. For example, if you are in the prone position with a high-powered rifle aiming at a target 6 feet high and 100 yards away, the round's trajectory could carry it over the impact berm.
- This can be corrected by lowering your target height or moving your target closer to the impact berm or by elevating your shooting position.

We should strive for each bullet to directly impact toward the bottom half of the bay's back berm. At the very least the bullet should impact at a shallow angle in the target area. This is to minimize the possibility of the bullet skipping over the berm which could happen if it strikes the ground at too steep an angle. This video demonstrates the point: <https://youtu.be/3uBBWY-an-c>

So please adjust your target height and location accordingly and do not shoot at targets placed on the ground.

FROM THE NRA REPRESENTATIVE, BRENT WEIL

SAVE THE DATE - Mark Your Calendar - Southern Indiana Friends of NRA Banquet and Auction

Yes, the Friends of NRA Banquet will occur on Friday August 6, 2021 at the Vanderburgh County 4-H Center. All tickets, tables and sponsorships will be valid, and all raffles will be drawn at the Banquet. Tickets are still \$100 each with a raffle pack or Tables of 6 will be \$500 and we will try to maintain some distance at the tables. See you there or be Square. Indiana is having a record year despite in raising money at the banquets so let's break some records here in Southern Indiana. Let's top \$100,000 this year!

Please see the flyer toward the bottom of the newsletter.

Brent Weil
812-453-0969

FROM THE GROUNDS CHAIRMAN, JEFF WEBBER

Workday credits for May:

Jayden Hawk, Ben Johnston, Mark Haymond, John May, Alex Iacampo, Troy Billman, Wade Kimbrill, Gene Stahl, Ed Miltenberger, John Flesburg, Carl Wunderlich, Jake Greer, Scott Lever, Roger Ford, John Devillez, Tim Hammers, Josh Cady, Mark Buddemeyer, Cord Morales, Cliff Herring.

We had a great workday and I want to thank everyone who came out to enjoy the cool weather. Bays 6 and 7 now have lights!!! We had a great team of electricians and we are planning on finishing up the rest of the wiring over the next month.

We also got 2 safety gate posts set to get ready for the 500 opening.

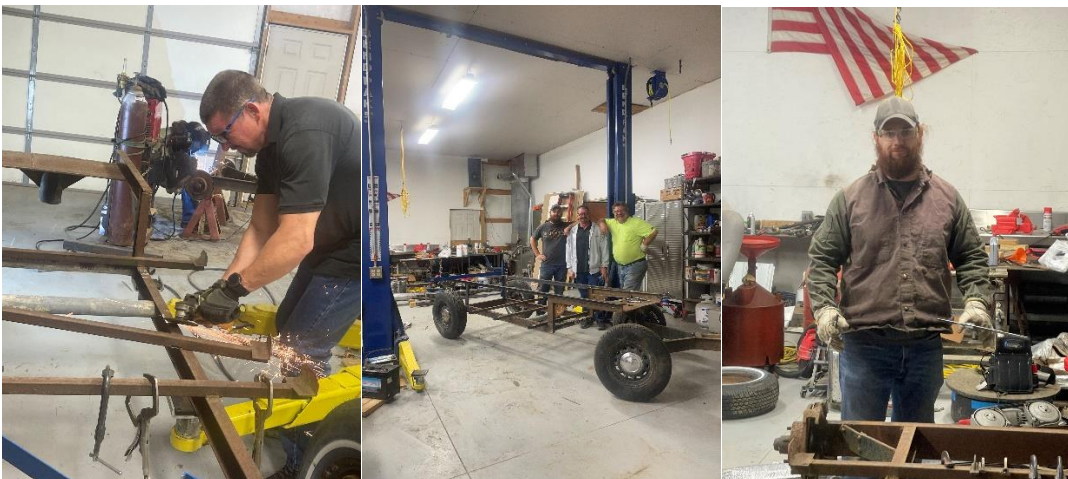
Also, Tete Tofani and Alex Iacampo came over and worked in my shop to get the War Wagon finished up. This will be a great asset to help with the setup of the pistol matches. Good job guys.

With June coming up so quick, it's time to start hitting the weed cutting and brush clearing hard. Bring all your tools of destruction!

Weed eaters, chainsaws and the likes are most welcome.

Thank You everyone.
See you at the range,
Jeff Webber

Below are some pictures of the last workday:



LOST AND FOUND

Members continue to leave items behind at the range, and other members are great about finding and reporting them to me.

Please notify me if you lose or leave something valuable at the range. The same goes for finding other member's items. Unfortunately, I get both calls (finding and losing), but very few that connect.

If you take possession of found property, it must be reported within 24 hours.

Contact Mike Maurer (812-490-0949 or mikemaurer@wowway.com) or Joe Lutz (812-431-3672 or joerlutz3@gmail.com).

ATTENTION VETERANS!

VETERANS
HELP AS A "BATTLE BUDDY" FOR YOUR VETERAN BROTHERS

JOIN THE VANDERBURGH VETERAN COURT MENTOR PROGRAM
A PEER SUPPORT GROUP
**DEDICATED TO ASSISTING VETERANS RETURN TO
PRODUCTIVE LIVES**

FOR INFORMATION CONTACT GENE THWEATT
CELL 812 204 3438 EMAIL thweattgene@aol.com

Please know that request for information and explanation is not commitment to serve

AREA GUN SHOWS

None in the area this month.

**** Please confirm all dates and times of gun shows for yourself. Late changes do happen. ****



**26th ANNUAL FNRA BANQUET AND AUCTION
SW INDIANA FRIENDS OF NRA
BANQUET AND AUCTION
FRIDAY, AUGUST 6, 2021, 5:00 pm
VANDERBURGH COUNTY 4-H CENTER**

Come join fellow NRA members, gun owners, and sportsmen for a steak dinner and an evening of games, drawings, live and silent auctions, and raffles. Merchandise includes:

- Gun Safes
- Dillon Reloading Equipment
- Jewelry
- More than 50 firearms including collector's editions from Colt, Ruger, Remington, S&W, Marlin, Glock, Kimber, Weatherby, Winchester, Browning, and Savage
- Collector Knives
- Optics & Tactical Gear
- Historic Hollywood Collectables
- NRA Merchandise
- Wildlife Sculptures & Prints

Tickets are \$100 each, which includes a \$100 packet of bucket raffle tickets and your dinner ticket. Reserved tables of six are \$500, which includes six \$100 packets of bucket raffle tickets and six dinner tickets. "Dinner only" tickets are \$50 and includes five Grand Raffle tickets.

Doors open at 5:00 pm – Dinner served at 6:30 pm

All proceeds go to fund firearms/safety education and training programs, both locally and nationally sponsored by the NRA Foundation.

Tickets can be purchased at local gun shows, Red Ghost, IMPOC Guns, or by calling Brent Weil at cell (812)453-0969



On-line ticket purchase: www.friendsofnra.org
Thank you for your support!



Brownells/NRA Youth Day And CMP Rimfire Sporter Clinic at Red Brush Rifle Range



Place: Red Brush Rifle Range

Date: Sat. June 19th, 2021

Time: 7:00 AM - 1:00 PM

See www.redbrush.org for **REQUIRED** consent forms, registration information, and directions to the range. *(Pre-registration will open March 1, 2021)*
Attendance will be limited, and pre-registration confirmed by email.

Youth from 10 – 18 years old are invited to Red Brush Rifle Range for a **FREE** day of firearm safety education and shooting experience. After a safety talk and individualized instruction, all youth participants will have the opportunity to safely fire:

.22 Rifles

20-Gauge Shotguns

Air-Rifles

.22 Pistols

Archery

The .22 Rifle and .22 Pistol will be fired as a CMP Rim Fire Sporter Clinic
This will consist of a 30 minute class room in each discipline with NRA Instructor and live fire.

Course of fire will be: 15 rounds of live fire for each discipline on paper targets with one on one coaching from Red Brush volunteers

Red Brush Rifle Range will provide instructors, firearms, ammunition, eye and ear protection and targets

Schedule of Events (times are approximate)

- 7:00am-8:00am.....Check in for pre-registered youth
- 8:00am-8:30am Registration and Check-in for walk-ins (may be limited)
- 8:30am-9:00am Intro to Range, Pledge of Allegiance, Opening Prayer
- 9:00am-12:00pm Instructor-supervised shooting activities and CMP Clinic
- 12:00pm - 1:00pm.....Lunch

IMPORTANT: Attendance will be limited to first 60 participants to pre-register at www.redbrush.org. *Pre-registration will open on March 1, 2021.* A limited number of walk-ins may be accommodated, but overall attendance will be limited. Coordinator Charlie Hallam crhscoop@wowway.com or Mike Loy mwloy17@gmail.com

RED BRUSH PRECISION RIFLE CHALLENGE

WHEN IS IT?
LAST SUNDAY OF EVERY MONTH

WHERE IS IT?
385- & 500-YARD RIFLE BAYS

WHAT IS IT?
ENGAGE STEEL STATIC AND
REACTIVE TARGETS FROM 200-510
YARDS – 100 ROUND COURSE OF
FIRE – ALL STAGES TIMED

NEW MOVING TARGET SYSTEM

SIGN IN AT 8:00am, ZERO RANGE FROM 8:15-8:45am,
SAFETY BRIEF AT 8:45, FIRST ROUNDS DOWN RANGE AT
9:00am

REGISTRATION / WEB ADDRESS

WWW.FACEBOOK.COM/GROUPS/REDBRUSHPRCS

WWW.PRACTISCORE.COM (SEARCH FOR RED BRUSH
USING THE LONG RANGE RIFLE FILTER TOGGLE)

MATCH FEE

\$20 FOR MEMBERS
\$30 FOR NON-MEMBERS

EQUIPMENT

ANY RIFLE BETWEEN .223 &
.30 CALIBER – MAX. 3200
FPS, NO MAGNUM CALIBERS
– 10 ROUND MAGAZINES
NECESSARY FOR MOST
STAGES

AWARDS

-TROPHIES TO TOP 5
OVERALL
-SEASON POINTS RACE

-END OF SEASON FINALE
WITH BANQUET AND PRIZE
TABLE

STYLE

50% PRONE OR MODIFIED
PRONE FROM A BIPOD AND
REAR BAG

50% POSITIONAL FROM
VARIOUS PROPS SUCH AS
BARRICADES, CATTLE GATES,
TIRES, ROOFTOPS, ETC.

EXECUTIVE OFFICERS:

President

Joe Lutz
812-431-3672
joerlutz3@gmail.com

Vice President

Mike Rasche
812-449-9268
mrrasche@outlook.com

Treasurer

Bob Lawrence
812-490-1065
owfan@wowway.com

Secretary

John Fickas
812-477-6852
j.fickas@insightbb.com

Range Officer

Frank Findley
812-483-4611
ffindley@sbcglobal.net

CHAIRS:

Membership Chairman

Mike Maurer
812-305-2767
mikemaurer@wowway.com

Grounds Chairman

Jeff Webber
812-431-6226
drslayer35@gmail.com

Newsletter Editor

Jim Michaud
860-402-4155
James.E.Michaud@gmail.com

Webmasters

Ben Swartz
webmaster@redbrush.org

LEAGUES & EVENTS:

Apple-Seed Event

Ben Swartz
812-459-5097
ben@benswartz.com

AR-15 Match League

Jason Short
812-455-3455
isetta1956@gmail.com

Bowling Pin League

Charley Hallam
812-424-2358
crhscoop@wowway.com

IDPA Pistol

Brad Eadens
270-724-1618
GlassKid81@yahoo.com

Precision Rifle Challenge

Adam Leonberger
812-306-5584
redbrushprc@gmail.com

Range Scheduler

Robert F. Adams
robertfadams@twc.com

Red Brush Steel

Alan Cox
redbrushsteel@hotmail.com

Revere's Riders Event

Ben Swartz
812-549-5097
ben@benswartz.com

Sub-Gun Event

Mike Maurer
812-305-2767
mikemaurer@wowway.com

Ultimate Bench Rest Event

Chester Bradford
812-431-5254
chesterbradford@yahoo.com

WWII Military Rifle Match Event

Mike Maurer
812-305-2767
mikemaurer@wowway.com

Tactical 2 Gun Match Event

Wesley Bennett
812-489-3497
wes.bennett2@gmail.com

NRA Representative

Brent Weil
812-453-0969
bweil@k-glaw.com